

Display Unit Software

Addendum

The following Addendum addresses all 2007 Lowrance 5-inch, and larger, color display units.



NOTE

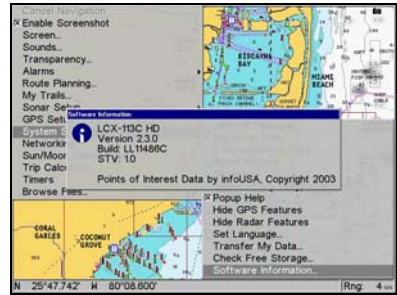
All 2007 display units NOT running version 2.3.0 software will require a free software upgrade to operate all the features addressed in this Addendum, including the Navionics® Platinum chart card features. Go to www.lowrance.com for the free software upgrade. Select the Downloads option from the Lowrance website. The Downloads screen will appear. Select Product Updates. The Product Software Updates screen will appear. Scroll through the Product list and select your unit to download the software update.

To check the current software version of your unit, press the **MENU** key twice to access the Main Menu.



Use the arrow key pad to scroll down to *System Setup*, as shown in the image at right, and press the **ENTER** key. A second menu will appear at the bottom right of the Main Menu. In the second menu, scroll down to *Software Information* at the bottom of the menu and press the **ENTER** key.

The Software Information screen will appear. The example shown in the right image on the following page shows the Software Information screen for an LCX-113c HD running version 2.3.0 software.



Select **System Setup**, at left, to access the menu with the **Software Information** screen. The **Software Information** screen is shown, at right.

New 2007 display unit software features

- Panoramic photos for many ports and marinas with Navionics Platinum card.
- 3D cartography charts with Navionics Platinum card.
- Aerial photo overlay of land and coastal areas with Navionics Platinum card.
- 2D and 3D synchronization with Navionics Platinum card.
- LBS-1 (Lowrance Broadband Sounder) digital sounder optimizer compatibility.
- Supports full range of Lowrance radar line, including the new "high definition" radars.
- Sonar sharing capability between units with Ethernet connection.
- Additional languages added; Greek and Polish.

Enhanced 2007 display unit software features

- Additional business services information e.g. local restaurants, shops, etc. with Navionics Platinum card.
- Additional wrecks data for new wrecks with Navionics Platinum card.
- Display major coastal roads with Navionics Platinum card.
- U.S. inland waterways with Navionics Platinum card.
- Existing language translations have been updated.

NOTE

The range at which the features outlined above appear may vary between different display unit types and sizes. To install and

display a Navionics chart card in your unit, refer to the heading "To display a Navionics chart" in the manual provided with your unit.

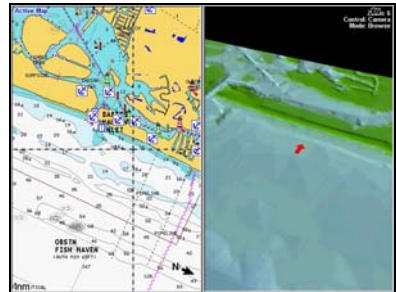
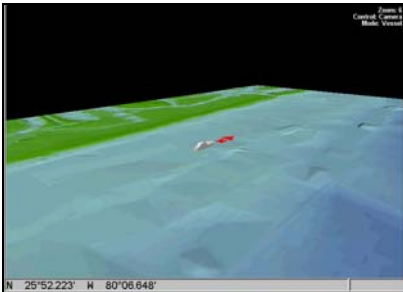
Navionics Platinum 3D cartography

With Navionics Platinum cards you can now display three dimensional graphical views of land and underwater contours. 3D cartography features include:

- Active and planning operation modes.
- 360° degree rotation of selected 3D view.
- Aerial photo overlay options.

3D cartography provides a graphical view of land and sea contours around your boat. Land masses are shown in green; the shade will depend on the height above sea level. Water, the sea-bed and submerged objects are shown in varying shades of blue.

3D cartography can be viewed in full screen or split screen mode. Full screen mode is shown in the bottom left image. Split screen mode is shown in the bottom right image. To toggle between the two "windows" in split screen mode, press the **PAGES** key twice.



Full screen 3D cartography mode is shown, at left. Split screen mode is shown, at right. For more information on split screen map operation, refer to the topic *"Map With Sonar Split Screen"* in the manual provided with your unit.

The 3D chart can be viewed in two different modes

Active mode (cross-hair map cursor NOT on-screen)

Active mode, when the cross-hair map cursor is not active on the map screen, is the default mode when you open the 3D application provided the unit has a fix for your current position. The screen will show an aerial view of the 3D chart above your boat. You will see a boat icon on the map screen indicating your position. As your boat moves the chart automatically adjusts relative to your new position.

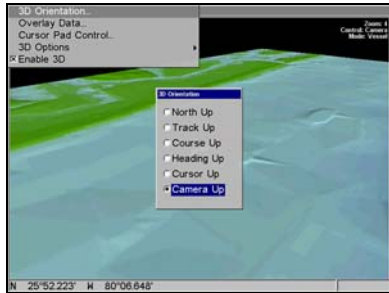
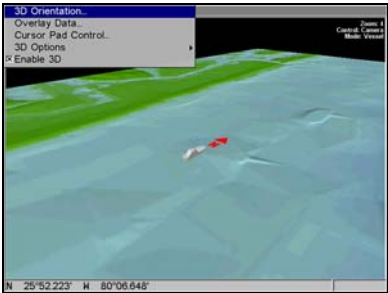
Planning mode (cross-hair map cursor on-screen)

Planning mode, when you have the cursor on-screen, allows you to view areas outside your current position. Use the arrow key pad to navigate around the chart and view other areas. All the functions available in "active mode" are available in planning mode, as well. Control of the chart is the same as active mode. Press the **EXIT** key to place the unit back in active mode.

3D cartography menu options

The 3D cartography mode menu has several options that affect the 3D map. The 3D menu is shown in the bottom left image. To access the 3D menu, while in 3D mode, press the **MENU** key on the right side of the display unit.

3D Orientation



The 3D menu is shown, at left. The 3D Orientation menu is shown, at right.

Use the *3D Orientation* menu to select between 6 different map views. To select between the different map views use the arrow key pad and scroll through the list. Once you have highlighted a selection press the **ENTER** key. In the above right image the Camera Up view has been selected. The different 3D map views are:

North Up always shows the map with North at the top of the screen.

Track Up rotates the map so that the direction you are traveling is always at the top of the screen.

Course Up displays the map with your course at the top of the screen.

Heading Up displays the map with your heading at the top of the screen.

Cursor Up activates the 3D map cursor, allowing you to change the angle of the 3D map screen using the arrow key pad.

Camera Up activates the 3D map cursor, allowing you to move the 3D map on its axis using the arrow key pad.

Overlay Data

For information on Overlay Data, refer to the topic "Overlay Data" in the manual provided with your unit.

Cursor Pad Control



3D View will place the map screen in cursor view. Selecting Camera view will set the map screen to Camera view. Pressing the **EXIT** key while the 3D screen is active also will toggle between these two views.

3D Options

The *3D Options* menu controls Hue, Vertical Exaggeration and Aerial Overlay.



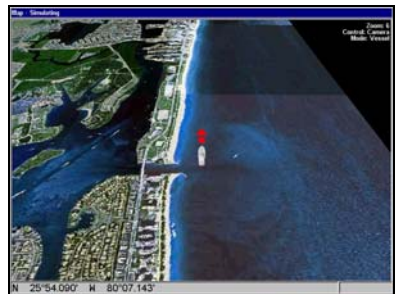
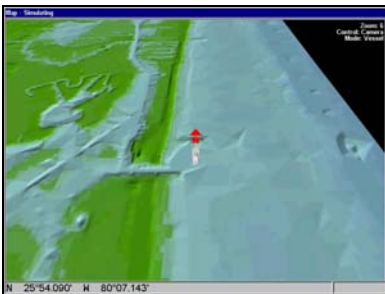
Classroom Land is the default 3D map view. It displays land masses as green. Selecting Tan Land will display land masses as tan.



This feature will change the vertical exaggeration of the 3D map screen. Use the slide control to increase or decrease the vertical view of the map.




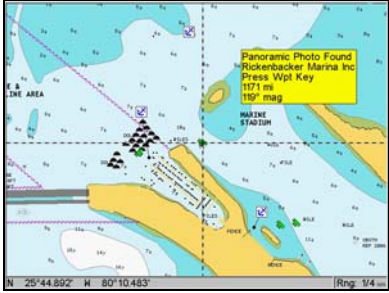
Use the Aerial Overlay feature to overlay aerial images on the 3D map. You can select aerial overlays for Sea Only, Land Only, or both Land & Sea.



The image at left shows the 3D chart without aerial overlay data. The image at right shows the 3D chart with Land & Sea aerial overlay data.

Navionics Platinum card panoramic photos

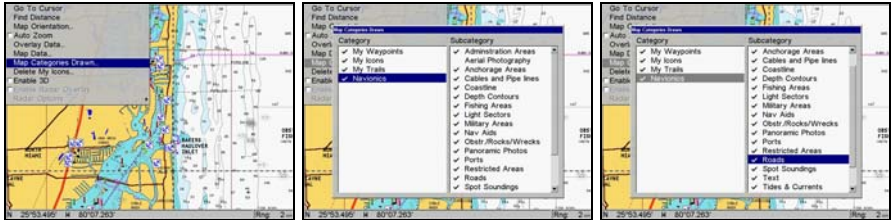
 Panoramic photos of many ports and marinas can be displayed using the Navionics Platinum card. The availability of photos is indicated by a green camera symbol on the map screen. To view camera symbols, the map screen will need to be zoomed in to at least the 1 nautical mile mark.



To display a panoramic photo, center the cross-hair map cursor over a specific camera symbol, as shown in the left image above. If the popup map information feature is on, a "pop up" box will appear with information about the selected location. When the **WPT** (Waypoint) key is pressed a panoramic photo will appear, as shown in the right image above. The angle of the camera on the map screen indicates the direction the camera was facing when the image was taken.

Navionics Platinum card map categories

Navionics Platinum series cards feature aerial photography, additional wrecks and major roads. You can selectively choose to turn on and off Navionics map features from the *Map Categories Drawn* menu. The Map Categories Drawn menu can be accessed from the Map Menu. In the Map Menu use the arrow key pad to scroll down to Map Categories Drawn and press the **ENTER** key.



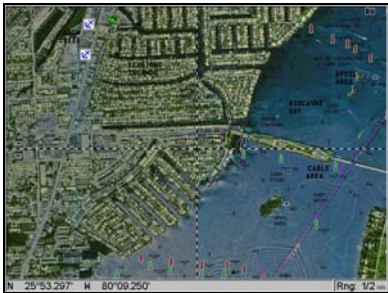
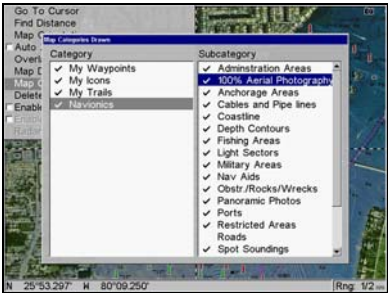
The Map Categories Drawn feature highlighted in the Map Menu, far left image. The center image shows Navionics Category selected. The far right image shows the Roads Subcategory feature activated.

The Map Categories Drawn menu will appear. In the Map Categories Drawn menu you will see two columns; *Category* and *Subcategory*.



The image at left shows the map screen with the Map Categories Drawn "Roads" feature turned off. The image at right shows the map screen with the Roads feature active.

Another Navionics *Subcategory* menu feature is Aerial Photography. Turning this feature on will overlay the map screen with an aerial photo. Pressing the **ENTER** key will "toggle" between five transparency levels: off, 25, 50, 75 or 100 percent.



The Navionics *Subcategory* "Aerial Photography" is highlighted, at left. The image at right shows the map with 100 percent aerial photo overlay.

NOTE

If the aerial overlay feature is active and set to Land & Sea Mode, roads will fade as the transparency level is decreased.

Enable Screenshot feature

A new feature included with the version 2.3.0 software is the ability to capture screenshots from the display. To activate this feature go to the Main Menu. You will see the *Enable Screenshot* feature with a checkbox next to it. Highlight Enable Screenshot and press the **ENTER** key to turn this feature on or off.

To access these preset modes, while in Sonar mode, press the **MENU** key on the right side of the unit to bring up the Sonar menu. From the Sonar menu use the arrow key pad to scroll down to *Sonar Features* and press the **ENTER** key. The Sonar Features screen will appear. Now highlight *Fishing Mode* and press the **ENTER** key.

A drop down menu will appear with eight preset modes; General Use, Shallow water, Fresh water, Deep water, Slow trolling, Fast trolling, Clear water and Brackish water. While each of these preset modes has default settings, the default values can be changed. See the topic "*Depth Range - Upper and Lower Limits*" in the manual provided with your unit.

If you change the preset default values and need to reset them to their original default setting, use the *Reset Mode* button in the Sonar Features screen. The type of environment you are fishing in will help you determine which preset setting is best.

For example, Shallow water mode limits sonar digital search to 60 feet. While the unit will still "track" at deeper water levels while in Shallow water mode it will limit its search to 60 feet. If you are fishing in water that is less than 100 feet deep, you might want to use Shallow water mode.

In Fresh water mode the unit limits its digital sonar search to 400 feet. If you are fishing in water where the bottom drops out below 100 feet you might consider using Fresh water mode.

If you set the unit to Deep water mode you will notice the sonar background screen turns "deep blue." This is the default setting for this mode. If you want to change the background color use the *Sonar Chart Mode* menu in the Sonar Features screen. Deep water mode automatically turns on the "low" Surface Clarity setting and defaults to the 50 kHz transducer frequency setting.

Notes

Notes

LOWRANCE®

Pub. 988-0151-57A

Printed in USA and Mexico

© Copyright 2008
All Rights Reserved
Navico